

# UNDERSTANDING THE DIFFERENCE MANAGED VS UNMANAGED SWITCHES

Switches play a crucial role in your IT infrastructure. They are the “**building blocks**” of any modern network. They are a critical part of network configuration that helps to:



Improve network bandwidth



Reduce the load off personal computers



Enhance network efficiency

## What are Managed Switches?

Managed switches are customizable, fully configurable, and provide a range of data on performance.

### Features of Managed Switches

- ➔ Spanning Tree Protocol (STP) support
- ➔ Port mirroring
- ➔ VLAN support
- ➔ Reliability
- ➔ Ease-of-use
- ➔ Device optimization
- ➔ Smooth Management
- ➔ Improved security

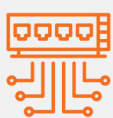
## What are Unmanaged Switches?

Unmanaged switches are unconfigured and are designed to plug in and run.

### Features of Unmanaged Switches

- ➔ Plug-and-play
- ➔ Easy-to-deploy
- ➔ Supports simple network topologies
- ➔ A better option to store MAC addresses
- ➔ Cost-effective

## Factors Differentiating Managed and Unmanaged Switches



### Capability

Managed switches are more suitable for larger networks, while unmanaged switches are used in small networks with only basic needs.



### Security

Managed switches provide configurable security settings to identify network threats, whereas unmanaged switches do not offer such capabilities.



### Cost

Unmanaged switches are cheap and simple to run, whereas managed switches cost more and require more expertise to provision and manage.



### Remote management and access

Managed switches offer remote access capabilities to resolve issues faster, while unmanaged switches cannot be accessed remotely.

## Why CXtec?

CXtec is the world's leading provider of preowned switches from leading brands like Cisco and HP. Our exclusive brand equal2new® provides all the advantages of purchasing refurbished network switches. With equal2new, you get:



High-quality switches



90% off the list price



Advanced replacement



99.51% reliability